

TIPS FOR FRAMING
BY JOHN DONALDSON ART

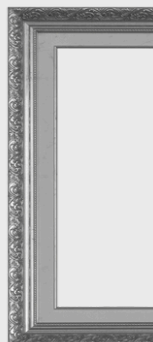
Framing Guidance



TIPS FOR FRAMING

Tips For Choosing Your Frame

At John Donaldson Art, many of our paintings are unframed. This guide can provide some tips for you to consider if this is new to you.



Contents

WHY FRAME 03

CHOOSING THE RIGHT FRAME 04

FRAME COLOUR 05

FRAME STYLE 06

FRAMING OIL & ACRYLIC PAINTINGS 07

FRAMING MIXED MEDIA, WATERCOLOUR & PRINTS 08

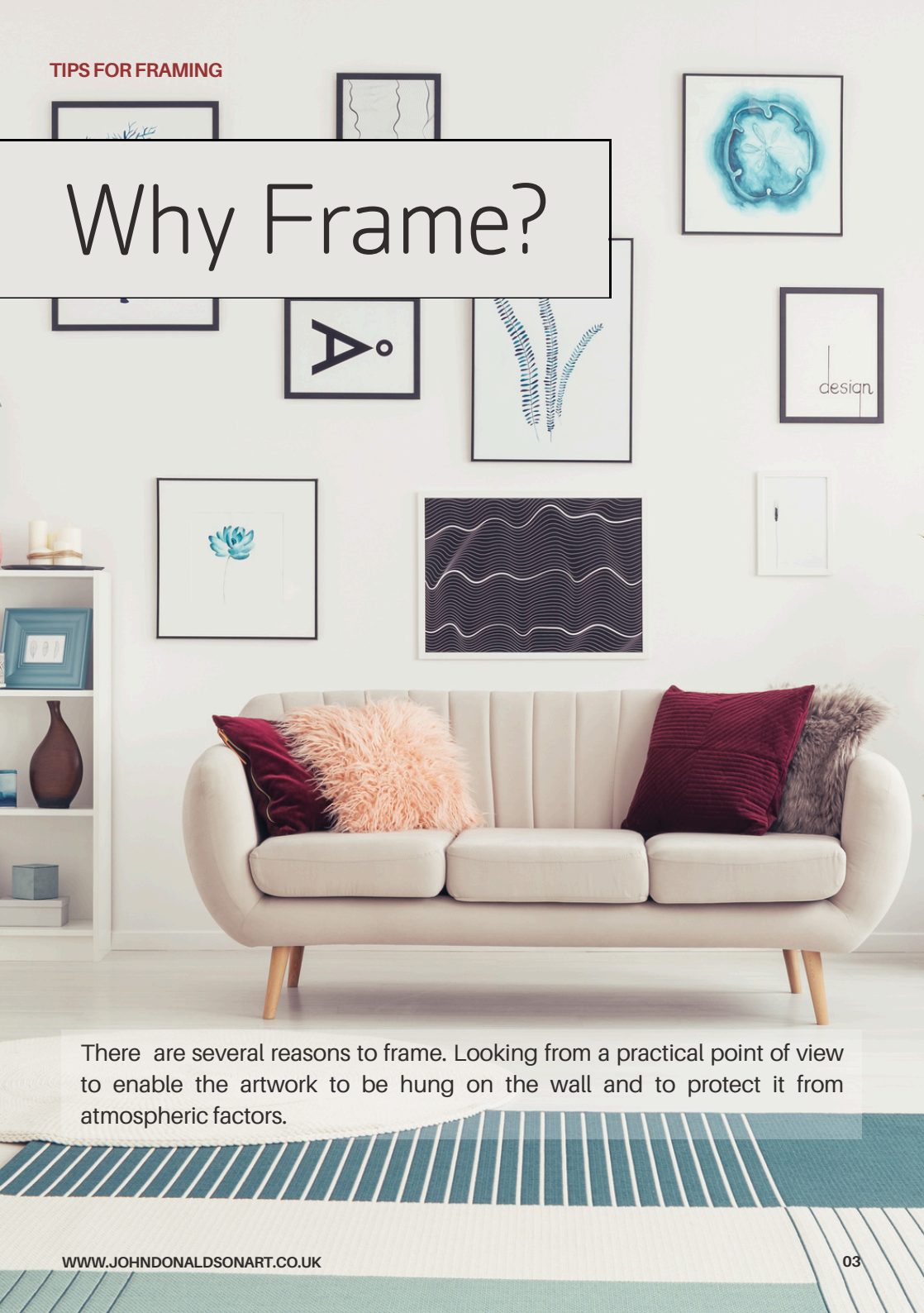
FRAME WEIGHT 09

YOUR ENVIRONMENT 10

TIME TO BUY YOUR FRAME 11



Why Frame?



There are several reasons to frame. Looking from a practical point of view to enable the artwork to be hung on the wall and to protect it from atmospheric factors.

Choosing The Right Frame

When choosing your frame there are a few points to consider, such as the medium the artwork is painted in as well as the colour and style of the frame.



Frame Colour

The frame provides a harmonious connection between the painting and its surroundings. The lightness or darkness of the frame is more important than the colour, to ensure the art is not overpowered. For instance a dark painting on a light wall would benefit from medium toned frame and vice versa.

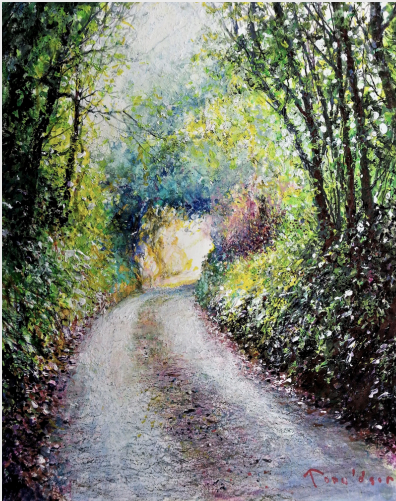


TIPS FOR FRAMING

Frame Style

The style of framing moulding is a matter of personal taste as many styles are available from ornate through to modern. Avoid using similar moulding colours to the painting to allow the art to be the main focus, not the frame itself.

In general, the smaller the painting the wider the frame, whereas larger artworks work well with minimal frames or no frame at all.



TIPS FOR FRAMING

Framing Oil & Acrylic Paintings

Oil paintings and acrylic paintings do not need to be framed behind glass as they will be varnished appropriately.

This will prevent dirt from damaging the surface of the paint and create a barrier for the paint.



Framing Mixed Media, Watercolours & Prints

Watercolours and mixed media must be framed behind glass with a mount to prevent contact between the painting or print and the glass.

Mounts help to highlight the work, Neutral coloured mounts are most popular for maintaining focus on the art.



Frame Weight

Large paintings when framed will add significant weight therefore this needs to be considered for hanging. A panel painting will require a minimal frame in order to hang it, whereas a canvas can simply hook onto the wall without a frame.

For a more contemporary look, some smaller paintings suit being on a shelf, especially in the company of others.



TIPS FOR FRAMING

Your Environment

Watercolours, pastels, mixed media and prints are sensitive to UV light and will fade over time..This can be resolved by using UV filter glass or positioning away from direct sunlight. Oil and acrylic are not so susceptible..

Also consider a low reflective glass to prevent glare interfering when viewing the artwork. Keep paintings away from sources of direct heat such as radiators and fires.



Time To Buy Your Frame

You may be able to buy your frame online or at a store if the painting dimensions are standard sizing. You may visit a local framer for advice and a quotation depending on your requirements before committing to buying the frame.

Here is a typical range of moulding available.

